



Introduction

Lantek Integra Manufacturing is designed for companies interested in a complete and competitive solution capable of optimising its manufacturing processes and integration with CAD/CAM solutions.



Imagine being able to know, in real time, the status of each one of the parts or/and customer manufacturing orders. Imagine being able to have an optimised view considering different key variables in the workshop: delivery date, customer, sales order, machine, material and thickness, among other things.

The system takes into account different types of manufacturing requirements: planned from the management solution or from geometries like DWG, DXF files...

Workshop management

The bigger a company, the more complicated are its manufacturing structures. The user has the ability to monitor the volume of work, the status of completed operations and the optimisation of resources: machines, workers and sub-contracting centers.

From the office it is possible to reserve materials for a specific job or give priority to other jobs.

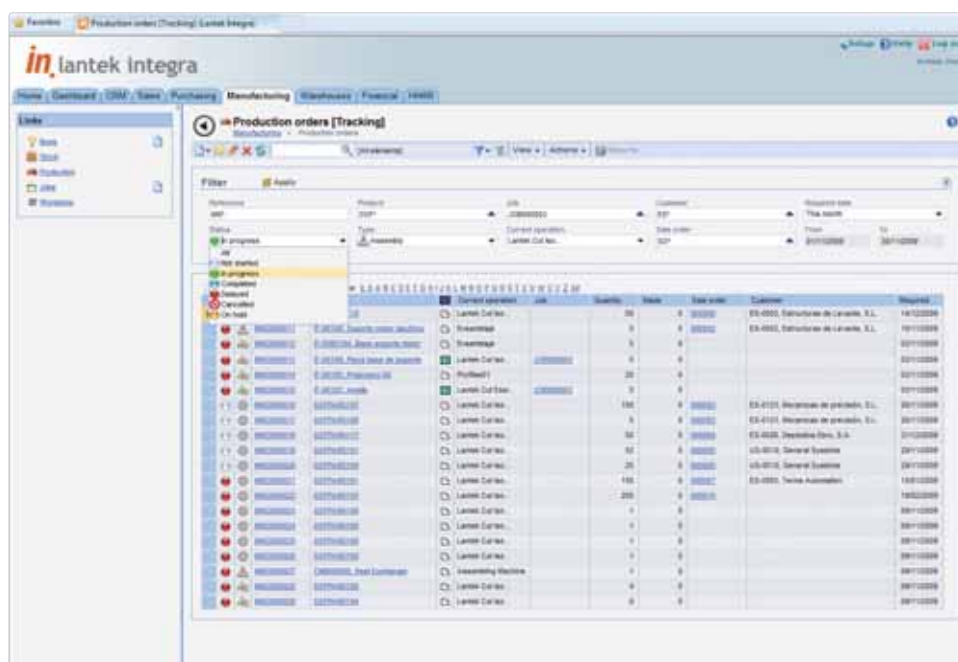
The system connects with the different workshop data solutions allowing the logging of times and real material consumption to each nest and production process.

Monitoring of the manufacturing process

To monitor a manufacturing order, the system has advanced functions for grouping the parts according to different criteria such as: machine, material, thickness, delivery date, sale order, customer and so on.

Considering the machine load, it is possible to optimise the launching of orders and the generation of CAD/CAM jobs.

The user can check, in real time, the status of manufactured product: if they are at stand-by, nesting, under production or finished. Also, these status are graphical and intuitively managed. Through different graphical indicators, it is possible to know the manufacturing evolution.



• Time and cost optimisation

From the manufacturing order list, the user can launch the CAD/CAM application for the creation of optimised nests. The necessary material and the times of manufacturing can be used to reduce the associated manufacturing costs.

The system guarantees the fulfillment of delivery dates thanks to an integral and optimal management of the production process.



“Lantek Integra Manufacturing simplifies and speeds up all the manufacturing processes and optimises the assigned costs and the delivery dates to the maximum”

• Competitiveness

Lantek Integra Manufacturing performs a comparison between estimated costs and true costs for selected manufacturing orders. It also allows a specific evaluation of those orders as well as the associated products, too.

Lantek Integra Manufacturing provides a powerful tool for companies to obtain more competitive prices and to understand the true costs and its variations for each product.

• Analysis and history of products

In order to analyse the manufacturing area, the system provides different information tools covering manufacturing orders, incurred costs, volume of work, changes of orders, etc.

It also contains advanced manufacturing history management.

The finished manufacturing orders go directly to the “history” section from a selected date by the user.

Lantek Integra Manufacturing, main characteristics:

- Profitability of manufacturing resources.
- Monitoring of the manufacturing process in real time.
- Times and costs optimization.
- Competitiveness.
- Analysis and record of manufacturing.