



• Product management

Lantek Integra Products is specially designed to meet the needs of companies requiring the management of information connected to their product range: product designs, structure, dimensions, costs, sale prices, purchase prices, and more.

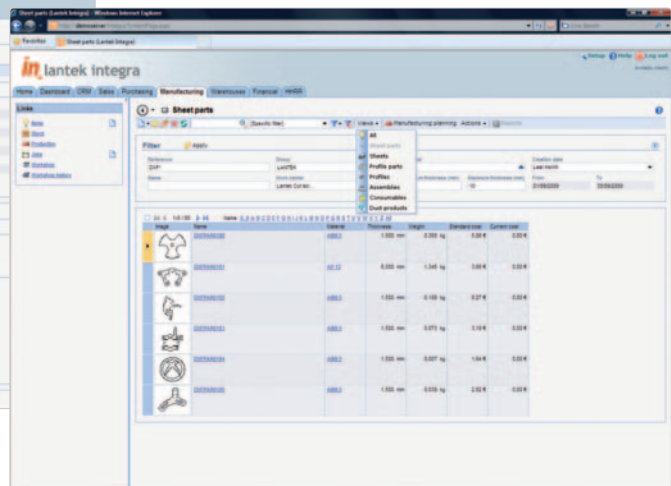
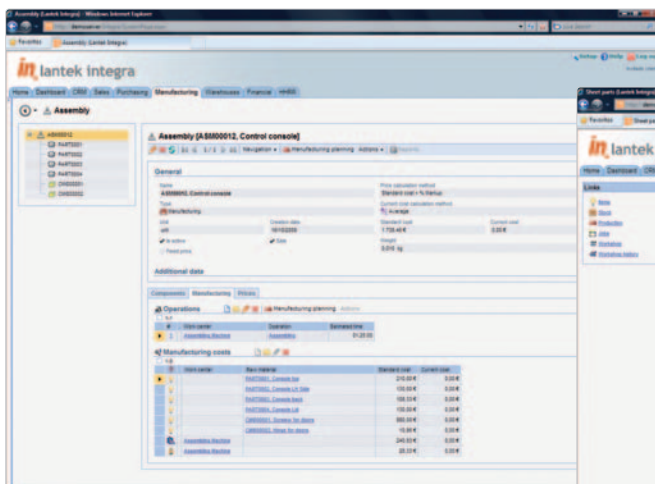
This solution provides 'view' and 'filter' options for each family of product: sheet parts, profile parts, sheets, structures, and consumables. So, the associated processes are optimized.

• Product structure management (BOM)

Lantek Integra BOM is an option specially designed for companies that produce and/or administer their own product structure management, i.e., products with a number of components and sub-components. Those components could be manufactured or purchased.

The system enables the user to easily visualize the complete product structure and its unique characteristics: the associated components, quantity, type, operations, costs, prices, and dimensions, among other things.

“Lantek Integra Products allow the user to manage and access all the key information related to all products of the company.”



• Monitoring of the manufacturing process integration with 2D and 3D CAD

Lantek Integra Products is fully integrated with 2D CAD solutions, as well as the main 3D CAD design systems such as: SolidWorks®, Solid Edge®, and Autodesk Inventor®.

3D assemblies with a defined product structure can be imported with their full Bill of Materials, generating the structure within the **Lantek** system. All sheet metal parts within the assembly are automatically unfolded.

The module includes a set of powerful standard format importers. These importers provide a fast and intuitive way to optimize the creation of parts.

In addition to this, the system is totally integrated with document management tools, allowing the user to edit, visualize, and manage all the documents associated to the products.

• Cost and price management

Each company has a different strategy for calculating costs, sales prices, and purchase prices for its products.

The system calculates the corresponding costs of each product automatically and in complete detail, to include: work site costs and material and labor costs, among others.

Lantek Integra Products enables costs and prices to be managed for the different product types: manufactured, purchased, sold, sub-contracted and more.

This data is automatically transferred to each of the business processes: sales, purchases and inventory management.

• Reserve management

Integrated with the rest of the functional modules, upon the launch of a sales order or manufacturing order, the system generates the product requirements and reserves automatically such that these orders can be realized.

Also, integrated with inventory management for each product, a minimum stock amount can be defined so that the system will generate a product requirement as soon as this amount is breached.

Therefore, each product has its own type of reservation category owing to sales order, to manufacturing order or to a minimum stock achievement among other things.

• Analysis and history of products

The system integrates and links all the data with products, fulfilled orders, manufacturing orders, sales, prices, descriptions, etc. allowing simple and effective analysis. It manages the record of all products registered by the company.



Lantek Integra Products - Main Characteristics:

- Product Structure Management (BOM)
- Integration with 2D and 3D CAD
- Cost and Price Management
- Management of Suppliers
- Analysis and History of Products